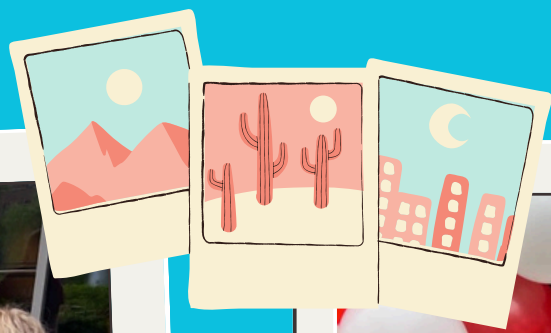
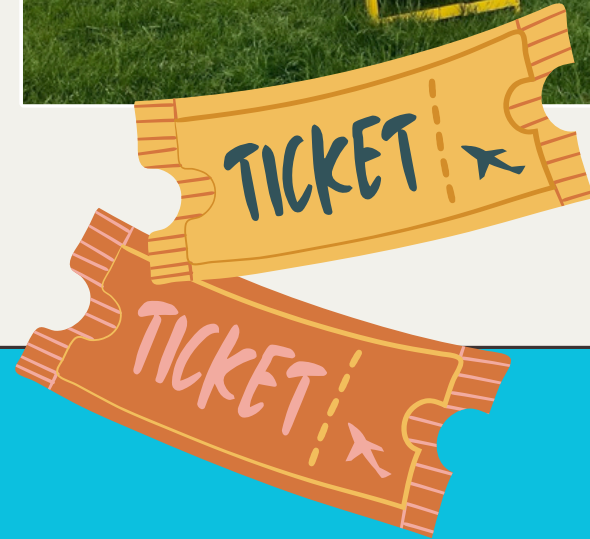
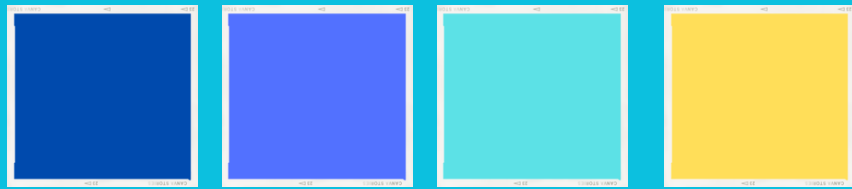




GUIDE BOOK

for recruitment



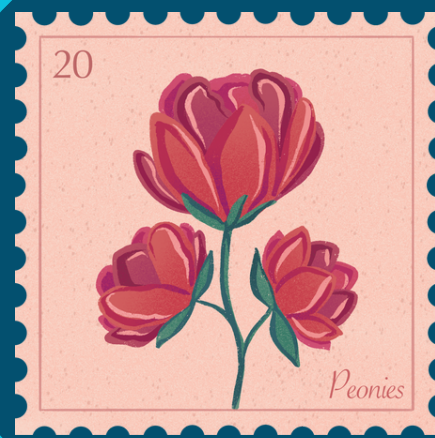
ROSE-HULMAN PC

2024-2025

What is Greek Life?

Sororities vs. Fraternities

Often confused, while sororities and fraternities are fundamentally the same, they are still vastly different! Sororities are Greek Life organizations where anyone who doesn't identify as a man may try and join, while Fraternities are the opposite!



NPC (National Panhellenic Conference)

NPC, or the National Panhellenic Conference, is an organization that supports 26 different sororities! The NPC on Rose-Hulman's campus oversees the 3 sororities we have on campus, and we help facilitate recruitment as well as enforce sorority-wide rules.



Philanthropy

Each sorority and fraternity is tied to a philanthropy organization where their fundraising typically goes to. Each sorority at Rose-Hulman supports a different non-profit organization that equally support amazing causes. Check them out further in the book!



Community

One of the most amazing things about Greek Life and sorority life is community. We have a community as Greek Life, within the sororities, and within each chapter. We all strive to provide community, support each other, and create a home on our campus,



Common Misconceptions

There are a lot of misconceptions about Greek Life, especially on the internet. We are actively working to erase the stereotypes and create the most positive experience possible. If you've heard any and have any questions, please ask any member of Greek Life!

RECRUITMENT EVENTS

FMR AND COB

WHAT IS FMR?

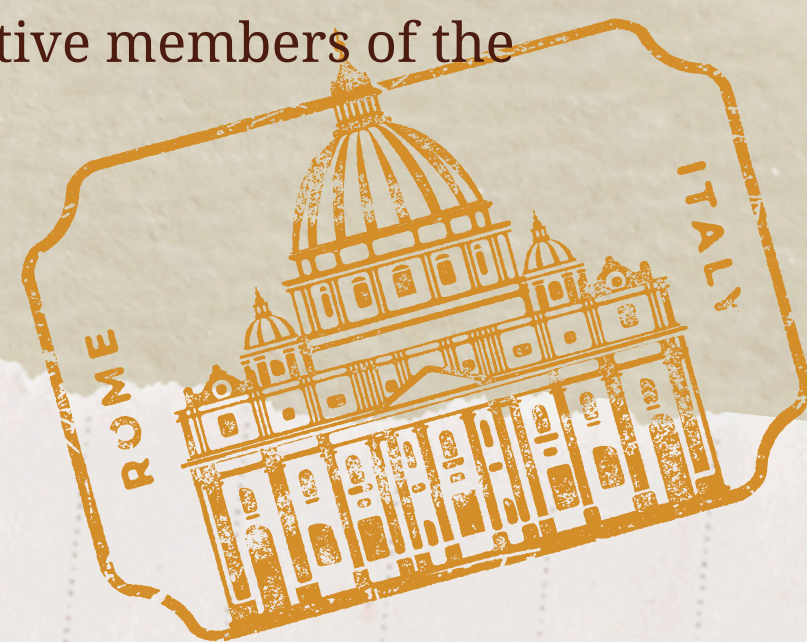
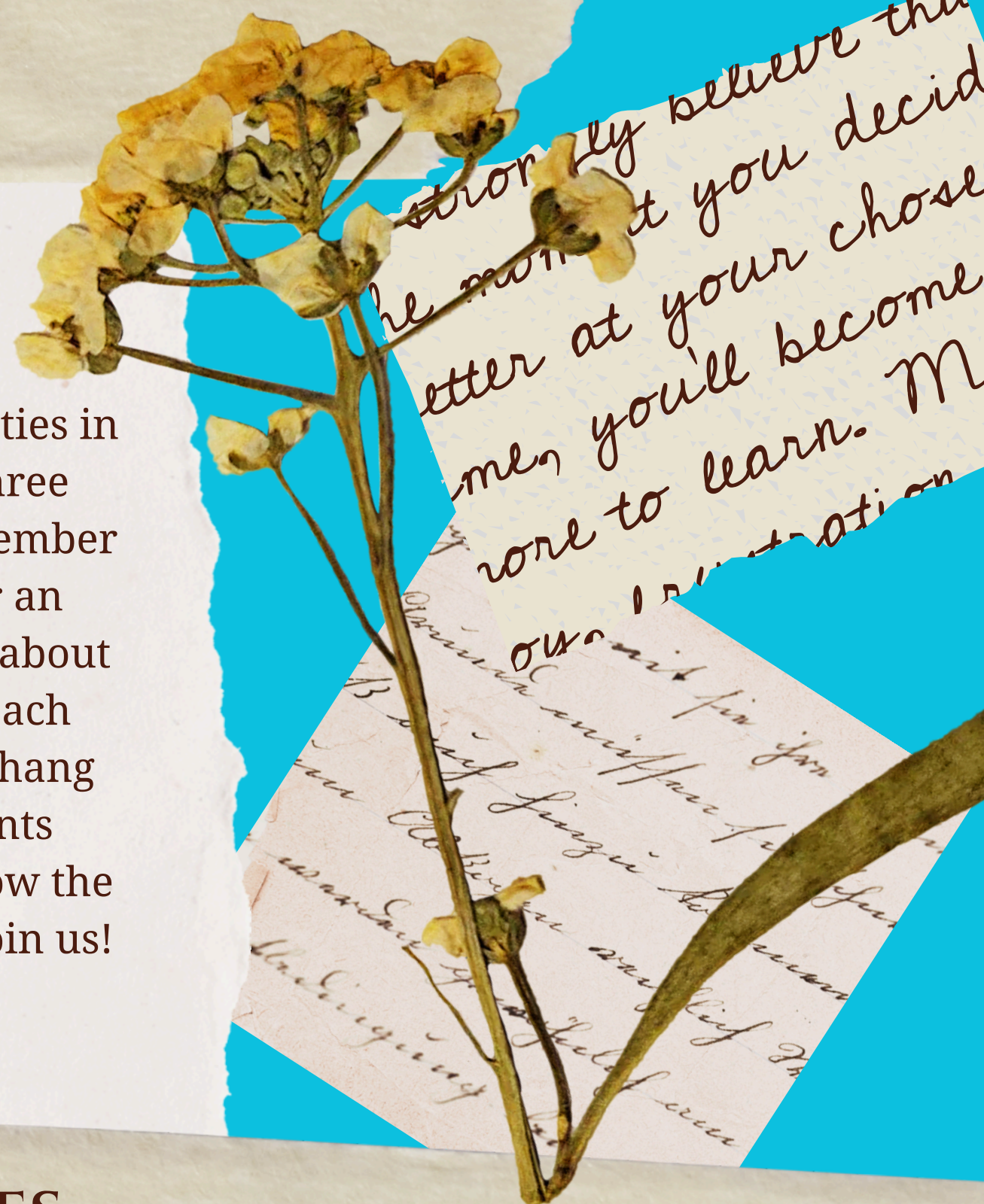
FMR, or Formal Recruitment, is a recruitment period open to all sororities in which a “formal” recruitment process occurs. The events occur over three days, and each day has a different number of parties each potential member can go to. In each day you will talk to the members of each sorority for an allotted amount of time, learn about their finances, philanthropy, and about what being in their chapter means to them. Prior to these three days, each sorority holds two informal events where you can meet the members, hang out, and enjoy the activities each sorority has set up! The informal events aren’t meant to be daunting, but a way us Greek Life members can show the eligible people on campus what we do and why we think you should join us!

FORMAL RECRUITMENT DATES

Because of Rose-Hulman’s schedule, we do not recruit over the summer as you might see other schools on social media do. We always do formal recruitment the first week of winter quarter, on that Tuesday, Thursday, and Friday. The Saturday after all the parties is when you will learn which sorority you get to be a part of! We call that day “bid day,” in which everyone gets to “run home”, a.k.a, join the active members of the sorority they just joined in a fun filled day of activities!

WHAT IS COB?

COB stands for continuous open bidding. For freshman, until formal recruitment is over, you cannot participate in this. There are also other circumstances in which you may not be able to participate, and if you have any questions, feel free to reach out to a Panhel exec member. For those eligible, the COB process is similar to FMR, except you do not have to go through the weeklong process, and you do not have to seek out each sorority, you can look at a specific sorority to join. More often than not, a sorority with open spots in their roster during the COB period may reach out to you before you even reach out to them, asking if you may be interested in joining them. It’s the perfect opportunity for a low-key recruitment experience, but panhel always recommends going through FMR first, so that you can learn about each sorority and make the most educated choice for yourself. Not every sorority will be able to participate in COB when those times happen, so banking on joining that way is not the way to go.



Commonly Mentioned Recruitment Vocab



MRABA
(Membership Recruitment Acceptance Binding Agreement) a one-year binding agreement signed by a PNM after ranking each chapter after preference round.



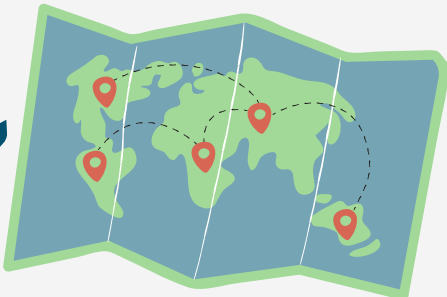
PNM
(Potential New Member) any eligible person able to go through recruitment for a sorority.



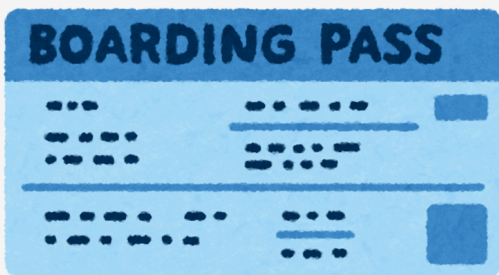
RECRUITMENT COUNSELOR
A sorority member serves as a recruitment guide. Each PNM will be assigned a counselor to guide them through the recruitment process.



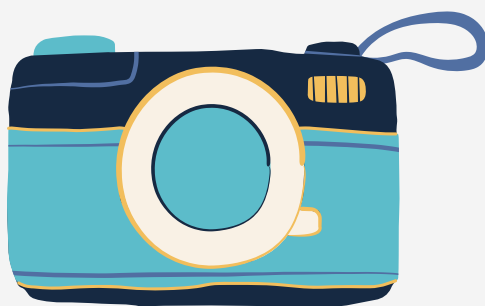
LEGACY
A daughter, sister, or granddaughter of an initiated member of a sorority.



INITIATION
A traditional ceremony that brings a new member into full membership of a sorority or a fraternity.



BID
An invitation to join a fraternity or a sorority.



BIG
An active member of a chapter who is paired with a new member as a mentor.



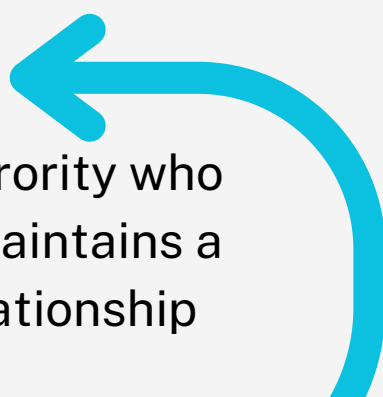
NEW MEMBER
A person who has accepted a bid from a sorority but is not yet an active member of the chapter.



CHAPTER
An individual membership unit of an international sorority or fraternity represented on campus.



CHAPTER ADVISOR
An alumna of a sorority who establishes and maintains a close advisory relationship with a chapter.



FMR DATES

2024



Destination :

No.



DAY
01

FMR Party Night 1

Mussallem Union

Tuesday December 3rd,
2024

DAY
02

FMR Party Night 2

Mussallem Union

Thursday December 5th,
2024

DAY
03

FMR Party Night 3

Mussallem Union

Friday December 6th,
2024

DAY
04

Bid Day

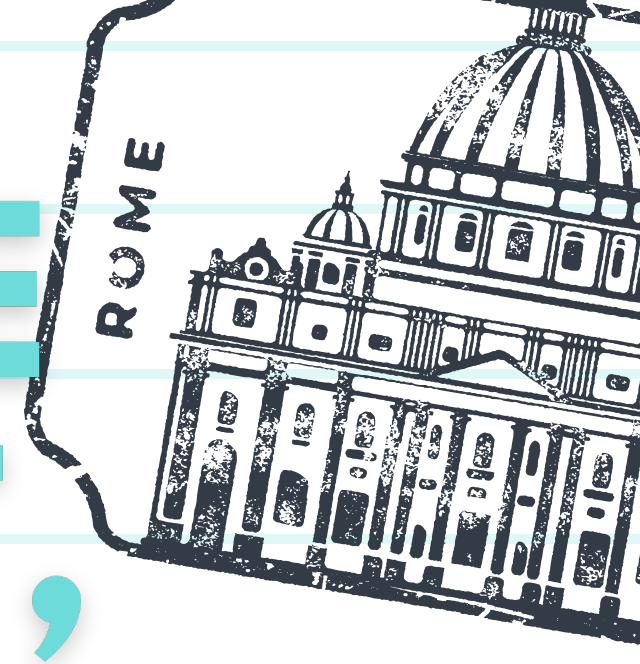
Mussallem Union

Saturday December 7th,
2024





A LETTER FROM THE PANHEL PRESIDENT,



DEAR POTENTIAL NEW MEMBER,

WELCOME TO SORORITY LIFE AT ROSE-HULMAN! THE PANHELLENIC COUNCIL AND I WARMLY WELCOME YOU AS YOU BEGIN YOUR EXCITING RECRUITMENT JOURNEY. THE YEARS YOU SPEND AT ROSE-HULMAN WILL BE EXCEPTIONAL BUT NONE WILL BE AS TRANSFORMATIVE OR REMARKABLE AS BEING A MEMBER OF GREEK LIFE. THE PANHELLENIC COMMUNITY CAN'T WAIT TO MEET YOU!



UNTIL I LEARNED WHAT GREEK LIFE TRULY LOOKED LIKE HERE AT ROSE, I HAD NO INTENTION OF RUSHING A SORORITY WHEN I FIRST STEPPED ON CAMPUS IN THE FALL OF MY FRESHMAN YEAR. RECRUITMENT WILL ALLOW YOU TO MEET SORORITY MEMBERS FROM EACH CHAPTER AND LEARN MORE ABOUT OUR UNIQUE GREEK COMMUNITY WHERE EVERYONE IS WELCOME.

HERE, JOINING ONE OF OUR THREE CHAPTERS MEANS TRULY FINDING A LIFE-LONG SISTERHOOD THAT IS COMMITTED TO HELPING YOU GROW TO BE THE BEST VERSION OF YOURSELF. WHETHER THAT MEANS MAKING NEW FRIENDS, FINDING STUDY BUDDIES, GAINING MENTORS FOR TODAY AND TOMORROW, OR LOOKING TO GIVE BACK TO THE COMMUNITY, GREEK LIFE HAS SOMETHING FOR EVERYONE.



FOR ME, BEING A MEMBER OF THE PANHELLENIC COMMUNITY HAS GIVEN ME SO MANY WONDERFUL OPPORTUNITIES TO BECOME A WELL-ROUNDED WOMAN. FROM LETTING MY LEADERSHIP SKILLS FLOURISH AS PRESIDENT OF THE PANHELLENIC COUNCIL TO VOLUNTEERING MY TIME TO RAISE MONEY FOR CHARITY THROUGH MY CHAPTER, GREEK LIFE AT ROSE HAS ALLOWED ME TO GROW IN SO MANY WAYS.

WITH AN OPEN MIND AND HEART, TAKE THIS OPPORTUNITY TO LEARN WHAT IT MEANS TO BE A MEMBER OF PANHELLENIC AND ENVISION YOURSELF AS A PART OF OUR SPECIAL COMMUNITY. NO MATTER WHICH ROAD LEADS HOME, WE BELIEVE THAT YOUR PRESENCE AND CONTRIBUTIONS CAN ENHANCE THE SPIRIT OF SISTERHOOD AND UNITY THAT WE HOLD DEAR.

BE YOURSELF, KEEP AN OPEN MIND, AND HAVE AN AWESOME RECRUITMENT!

GO GREEK,

ALEXANDRA ADAMS
PANHELLENIC COUNCIL PRESIDENT



Panhel Exec Profiles



Alex Adams

President

Major: Mechanical Engineering

Hometown: Independence, OH

Email: rhit.npcp@gmail.com

Fun Fact: I've gone floating in the Dead Sea, which is the lowest point on Earth.

Fav part of Greek Life: Finding a sisterhood and making friends I never would have made if it wasn't for the friendly and welcoming Greek life environment here at Rose.



Mac Gross

Vice President of Standards

Major: Biomedical Engineering

Hometown: Las Vegas, NV

Email: grossmr@rose-hulman.edu

Fun Fact: I am on the varsity volleyball and softball teams here at Rose!

Fav part of Greek Life: The connections you make during recruitment and deepen during your time here! I met so many women on campus in every grade and major during recruitment, it made the campus feel so much smaller the next week. Through my time in Greek Life, I have truly felt there is a place for everyone and you, along with others, can benefit greatly from the experience if you put in your time and make the effort!



Alyssa Solomon

Vice President of Public Relations

Major: Mechanical Engineering

Hometown: Noblesville, IN

Email: rhit.npcpr@gmail.com

Fun Fact: I got to meet Hayden Christensen!

Fav part of Greek Life: I love the community that we've created and the support I get from all my sisters and siblings.



Panhel Exec Profiles



Ella Hart

Vice President of Recruitment

Major: Mechanical Engineering

Hometown: Brownsburg, IN

Email: hartem@rose-hulman.edu

Fun Fact: I'm an Australian Citizen

Fav part of Greek Life: Everyone is so supportive and kind to one another, especially the three women's organizations! It's really nice to have such a strong women's community on a campus like Rose's.



Katie Cleary

Secretary/Treasurer

Major: Mechanical Engineering

Hometown: Indianapolis, IN

Email: clearyke@rose-hulman.edu

Fun Fact: I love to hike

Fav part of Greek Life: Being able to connect with people from other chapters that I would not have known outside of Greek life!

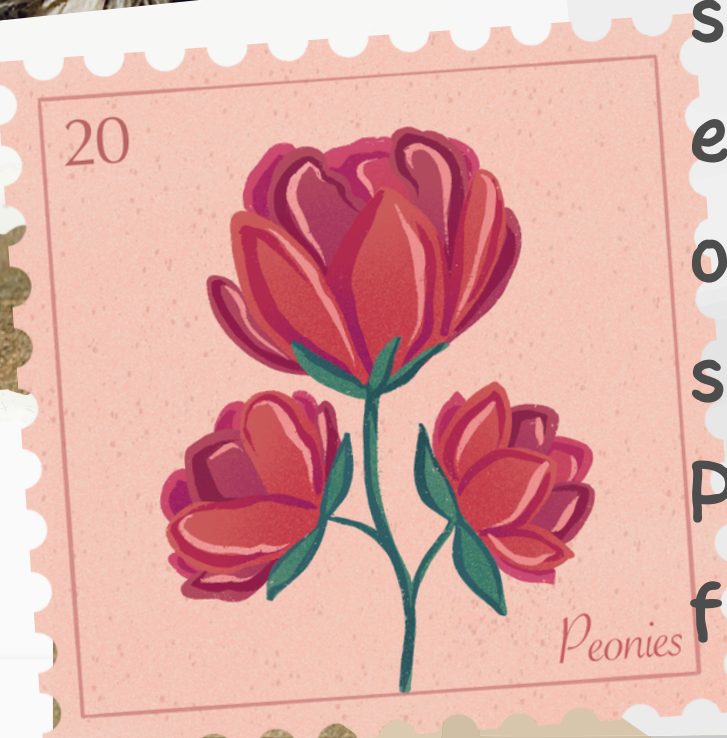


Panhel Advisor Profiles



Kristen Lyod

Kristen Bardou Loyd is the Director of the Union and Student Activities Office. Kristen earned a B.A. in History and Religion from Denison University and a M.S. in Higher Education Administration from Indiana University. Kristen and her staff "Run the Fun!" planning events, excursions, and providing activities of all kinds for students! Kristen also serves as the co-advisor for Panhellenic and supervises three fantastic staff members!



LeAnne Myers

LeAnne Myers is the Associate Director of Residence Life at Rose-Hulman. LeAnne started work at Rose-Hulman in December 2020. She received her B.A. in Studio Art from Brescia University and her M.A. in Student Administration in Higher Education from Ball State University. At Rose-Hulman, LeAnne supervises the Student Affairs Graduate Assistants, co-advises Panhellenic & Student Government.



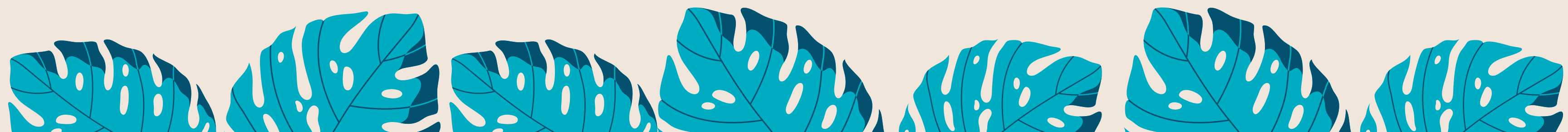


Alpha Omicron Pi

AOPi believes in a fraternal culture based on our values, and our Culture Principles were developed to provide our membership with a compass to help all members achieve the meaning of Fraternity in our Ritual. Our Culture Principles are: Accountability and Ownership, Collaboration, Engagement, Innovation, and Open and Honest Communication.

Core Values:

- ✓ Character
- ✓ Dignity
- ✓ Scholarship
- ✓ College Loyalty






A LETTER FROM THE CHAPTER PRESIDENT



HERE AT AOII, WE VALUE CHARACTER, DIGNITY, SCHOLARSHIP, AND COLLEGE LOYALTY. WE ARE A FAMILY THAT STRIVES TO BUILD EACH OTHER UP AND SUPPORT ACADEMIC AND PERSONAL ENDEAVORS. THROUGH OUR PHILANTHROPY, THE ARTHRITIS FOUNDATION, WE SUPPORT HELPING WITH CHILDHOOD ARTHRITIS IN HOPES OF RAISING AWARENESS AND FINDING A CURE. AOII INSPIRES AMBITION AND CREATES LIFELONG BONDS.



AOII IS WHERE I HAVE FOUND MY HOME! THIS FAMILY IS FULL OF PEOPLE THAT WILL ALWAYS HAVE MY BACK AND I KNOW THAT I CAN LEAN ON WHEN TIMES ARE HARD. DURING MY TIME AS A MEMBER OF AOII, I HAVE GROWN SO MUCH AS A PERSON, LEADER, AND SISTER. I LOVE BEING ABLE TO BRING CAMPUS TOGETHER DURING OUR EVENTS SUCH AS MR. ROSE AND STRIKEOUT TO SHOWCASE OUR LOVE AND VALUES TO ALL OF CAMPUS. EVEN AFTER GRADUATION, I KNOW THAT THE SIBLINGS I HAVE MET THROUGH AOII WILL BE THE PEOPLE I CONTINUE TO REACH OUT TO FOR YEARS TO COME!

-CASSIE MEYER, AOII CHAPTER PRESIDENT

Philanthropy

AOII'S INTERNATIONAL PHILANTHROPY IS ARTHRITIS AND, SINCE 1967, AOII HAS ENJOYED A LONG AND BENEFICIAL RELATIONSHIP WITH OUR ARTHRITIS PARTNER - THE ARTHRITIS FOUNDATION (AF). FOR MORE THAN FIVE DECADES, AOII CHAPTERS AND MEMBERS HAVE RAISED MILLIONS OF DOLLARS TO CREATE AWARENESS, FIND A CURE, AND MAKE LIFE EASIER FOR THOSE AFFLICTED WITH ARTHRITIS, A CRIPPLING DISEASE THAT FAR MORE FREQUENTLY AFFECTS WOMEN. DOLLARS RAISED HELP FUND AF PROGRAMMING SUCH AS JUVENILE ARTHRITIS CAMPS AND FAMILY SUMMITS, JUVENILE ARTHRITIS POWER PACKS, RESEARCH INITIATIVES, INNOVATIVE PROGRAMMING, AND MUCH MORE. LIKEWISE, OUR CANADIAN SISTERS PROUDLY SUPPORT THE ARTHRITIS SOCIETY OF CANADA WITH THEIR FUNDRAISING DOLLARS.



**Arthritis
Foundation®**



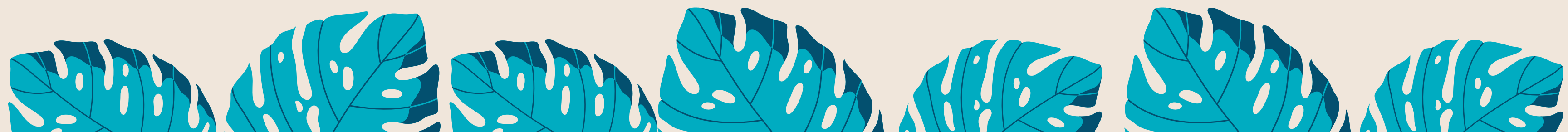
Chi Omega

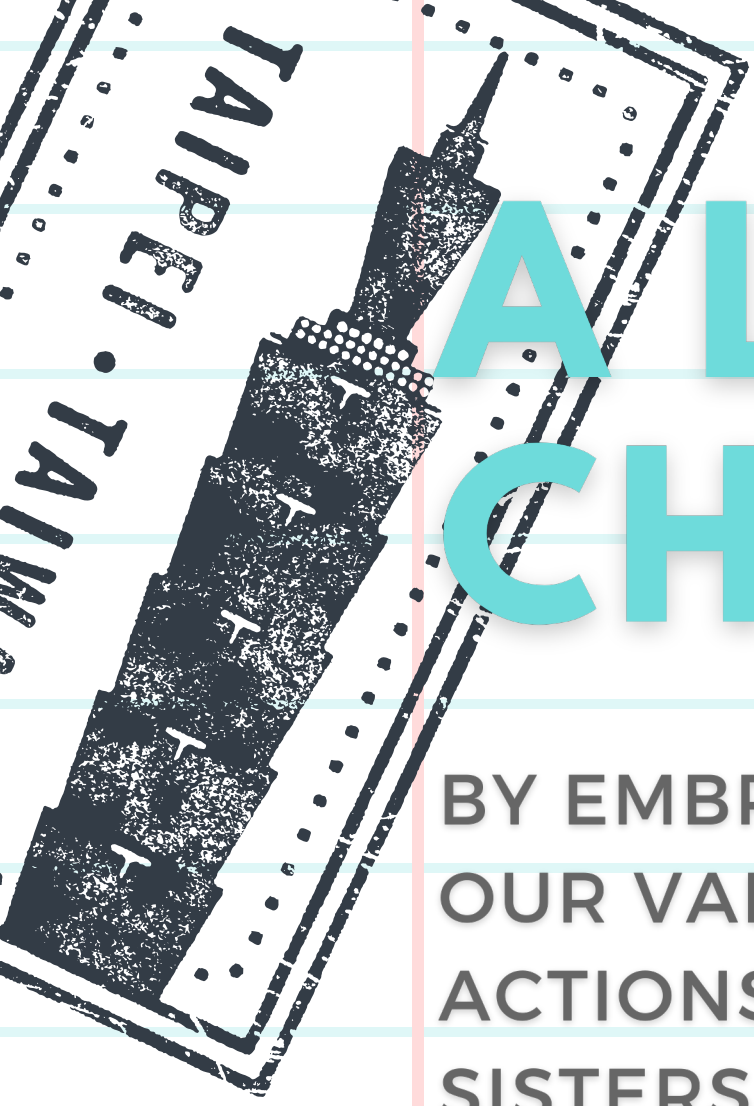
Our Sisters are committed to Chi Omega's six purposes. These purposes guide each Chi Omega member and include the following: Friendship, High Standards of Personnel, Sincere Learning and Creditable Scholarship, Participation in Campus Activities, Career, Development, Community Service.

The message of "personal responsibility" cannot be shared enough. Each member's choices and actions affect the entire chapter and our national organization.

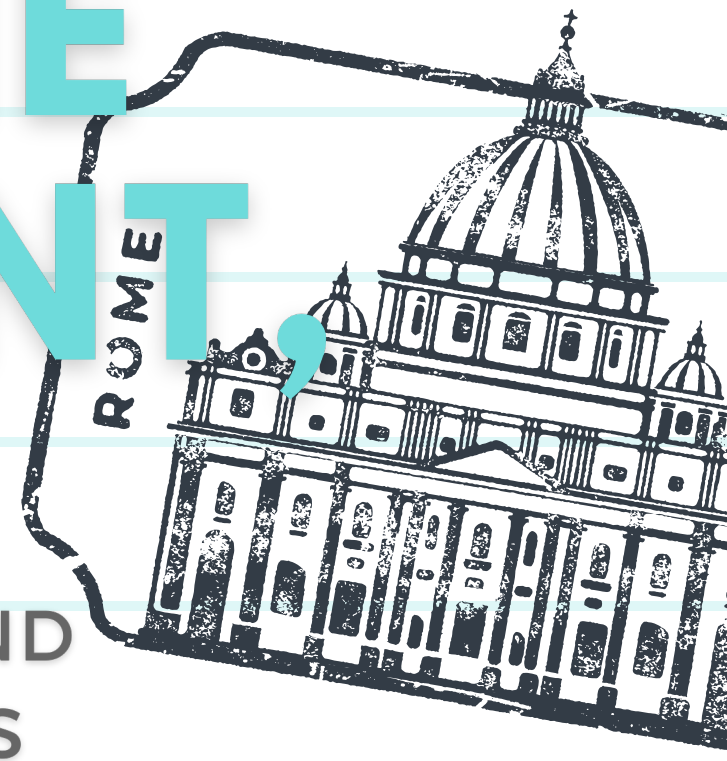
Core Values:

- ✔ Friendship
- ✔ Campus Involvement
- ✔ Scholarship
- ✔ Community Service
- ✔ High Standards of Personell
- ✔ Career Development





A LETTER FROM THE CHAPTER PRESIDENT



BY EMBRACING CHI OMEGA'S SIX PURPOSES AND PLACING OUR VALUES AT THE ROOT OF OUR WORDS, THOUGHTS, AND ACTIONS, WE ARE ABLE TO TRULY ENJOY ONE ANOTHER AS SISTERS AND AS FRIENDS.



CHI OMEGA IS A SISTERHOOD OF POISED, INTELLIGENT, AND FIERCE YOUNG WOMEN. WE NEVER BACK DOWN FROM A CHALLENGE AND LEAD OUR SISTERHOOD, CAMPUS, AND COMMUNITY WITH OUR HEARTS ON OUR SLEEVES. WE NOT ONLY EXCEL ACADEMICALLY BUT ARE GETTING INTERNSHIPS AT SOME OF THE TOP ORGANIZATIONS IN NATION. I AM NOT ONLY PROUD TO BE A CHI OMEGA AND WEAR THE LETTERS, BUT TO BE SURROUNDED BY WOMEN THAT SHARE THE SAME DRIVE, AMBITIONS, AND LOVE FOR FUN AND LIFE THAT I DO!

-LIBBY SMITH, CHI OMEGA CHAPTER PRESIDENT

Philanthropy

SINCE 1895, CHI OMEGA FRATERNITY MEMBERS HAVE GIVEN THEIR TIME AND TALENT TO PROVIDE SERVICE TO OTHERS. IN THE LATE 1990S, THE LEADERSHIP IN CHI OMEGA RESEARCHED OPPORTUNITIES FOR ESTABLISHING A NATIONAL PHILANTHROPY, AND IN 2002, THEY ANNOUNCED THE CHI OMEGA/MAKE-A-WISH ALLIANCE. SINCE THE START OF THIS ALLIANCE, CHI OMEGA HAS RAISED MORE THAN 35 MILLION DOLLARS AND HAS VOLUNTEERED OVER 1.4 MILLION HOURS FOR MAKE-A-WISH. BECAUSE OF THIS COMMITMENT, THEY RECOGNIZE CHI OMEGA AS ONE OF THEIR CAUSE CHAMPION SPONSORS.

Make-A-Wish®



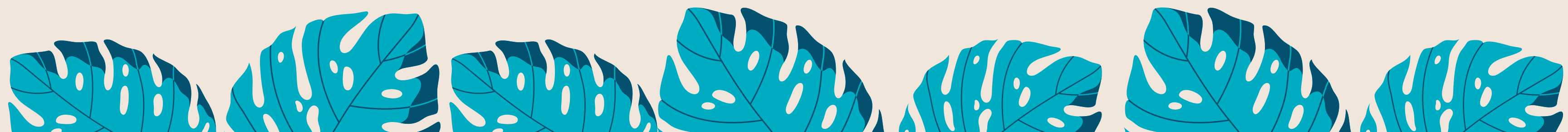
Tri Delta

Tri Delta is an assembly of women with shared values where you can be yourself and belong to something bigger. We are brave, bold and kind. We are passionate about serving others, committed to becoming the best version of ourselves and dedicated to helping women live, learn and lead—with Purpose—for a lifetime.



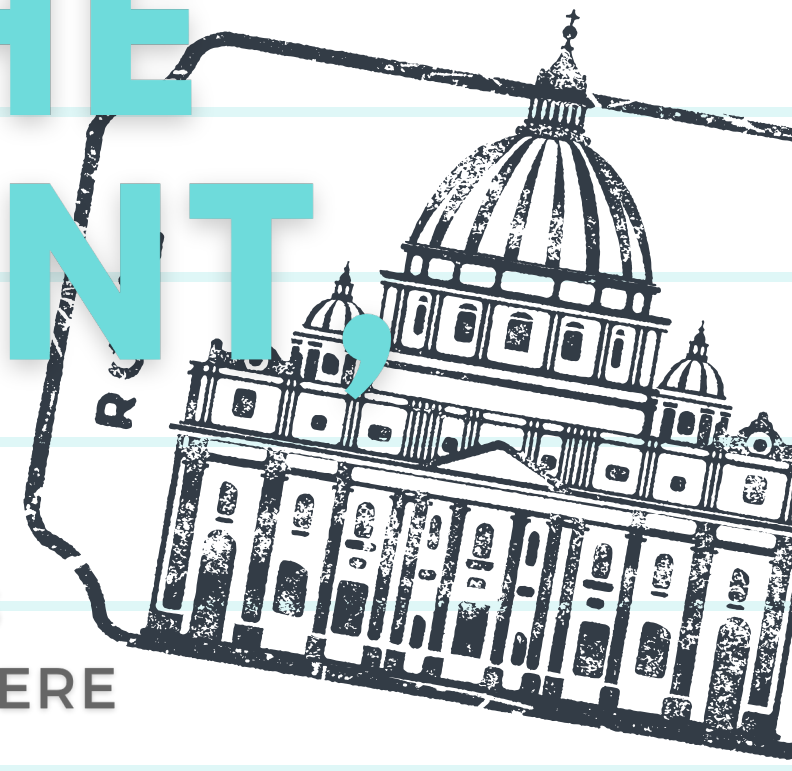
Core Values:

- ✓ Be Yourself And Belong
- ✓ Brave. Bold, and Kind
- ✓ Lifelong Growth and Friendship





A LETTER FROM THE CHAPTER PRESIDENT



TRI DELTA HAS THREE CORE VALUES OF TRUTH, SELF-SACRIFICE, AND FRIENDSHIP. THESE VALUES ARE A COMMON BOND BETWEEN SISTERS THAT BRING MEANINGFUL, LASTING FRIENDSHIP AND SUPPORT. WE WERE FOUNDED AS A SOCIETY THAT IS KIND ALIKE TO ALL AND WE ARE PASSIONATE ABOUT SERVING OTHERS. AS TRI DELTAS, WE ARE DEDICATED TO OUR PHILANTHROPY OF FIGHTING CHILDHOOD CANCER THROUGH OUR NATIONAL PARTNERSHIP WITH ST. JUDE CHILDREN'S RESEARCH HOSPITAL.

OUR CHAPTER HERE AT ROSE-HULMAN IS A PLACE WHERE YOU CAN BE YOURSELF AND BELONG TO SOMETHING BIGGER. WE ARE BRAVE, BOLD, AND KIND AND COMMITTED TO BECOMING THE BEST VERSION OF OURSELVES. TRI DELTA PROVIDES A LIFETIME OPPORTUNITY TO LIVE, LEARN, AND LEAD - WITH PURPOSE - IN A PLACE THAT VALUES SUPPORT, PERSONAL GROWTH, HIGH IDEALS, AND FRIENDSHIP.

BEING IN TRI DELTA HAS GIVEN ME AN AMAZING SUPPORT SYSTEM AND ALLOWED ME TO MEET SOME OF MY FAVORITE PEOPLE WHO WILL BE MY LIFELONG FRIENDS. I CAN'T WAIT FOR YOU TO FIND YOURS!

-BAYLEE UHRICK, TRI DELTA CHAPTER PRESIDENT

Philanthropy

FOUNDED AS A SOCIETY THAT WOULD BE KIND ALIKE TO ALL, TRI DELTAS ARE PASSIONATE ABOUT SERVING OTHERS. NOWHERE IS THIS MORE EVIDENT THAN IN OUR COMMITMENT TO PHILANTHROPY. AS TRI DELTAS, WE REMAIN DEDICATED TO THREE ASPECTS OF PHILANTHROPY: SISTERS HELPING SISTERS THROUGH TRI DELTA'S FOUNDATION, OUR COMMITMENT TO CHANGING THE WAY THE WORLD TREATS AND DEFEATS CHILDHOOD CANCER THROUGH OUR WORK WITH LOCAL AND REGIONAL CHILDREN'S HOSPITALS AND PEDIATRIC CANCER INITIATIVES AND THROUGH OUR NATIONAL PARTNERSHIP WITH ST. JUDE CHILDREN'S RESEARCH HOSPITAL.



**St. Jude Children's
Research Hospital**

ALSAC • Danny Thomas, Founder
Finding cures. Saving children.



PNM BILL OF RIGHTS

You have the right to...

- be treated as an individual, be fully informed about the recruitment process, and the right to ask questions and receive true and objective answers from recruitment counselors and members

- be treated with respect, be treated as a capable and mature person without being patronized, ask how and why and receive straight answers

- have and express opinions to recruitment counselors, have inviolable confidentiality when sharing information with recruitment counselors, make informed choices without undue pressure from others

- the right to be fully informed about the NPC Unanimous Agreements implicit in the membership recruitment acceptance binding agreement (MRABA) signing process

- make one's own choice and decision and accept full responsibility for the results of that decision, have a positive, safe and enriching recruitment and new member experience



Panhel is so excited to spend this year with you, and we hope you can join us during recruitment!

CONTACT US

If you have any questions at all, please reach out to one of the members of Panhel Exec! If you are running any issues, something bad has happened to you, or something against the rules happened and you'd wish to report it, please contact our VP or standards, Mac Gross!

rhit.npcs@gmail.com



GREEK ALPHABET

Alpha, Beta, Gamma, Delta, Epsilon, Zeta, Eta, Theta, Iota, Kappa, Lambda, Mu, Nu, Xi, Omicron, Pi, Rho, Sigma, Tau, Upsilon, Phi, Chi, Psi, Omega

A	B	Γ	Δ	E	Z
Alpha (al-fah)	Beta (bay-tah)	Gamma (gam-mah)	Delta (del-tah)	Epsilon (ep-si-lon)	Zeta (zay-tah)
H	Θ	I	K	Λ	M
Eta (ay-tay)	Theta (thay-tay)	Iota (eye-o-tah)	Kappa (cap-ah)	Lambda (lam-dah)	Mu (mew)
N	Ξ	O	Π	P	Σ
Nu (new)	Xi (zz-eye)	Omicron (ome-cron)	Pi (pie)	Rho (roe)	Sigma (sig-mah)
T	Υ	Φ	X	Ψ	Ω
Tau (taw)	op-silon (op-silon)	Fie (fie)	Chi (k-eye)	Psi (sigh)	Omega (o-me-gah)